

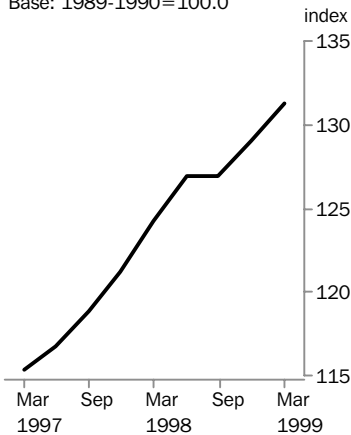
# HOUSE PRICE INDEXES

EIGHT  
CAPITAL  
CITIES

EMBARGO: 11:30AM (CANBERRA TIME) THURS 3 JUNE 1999

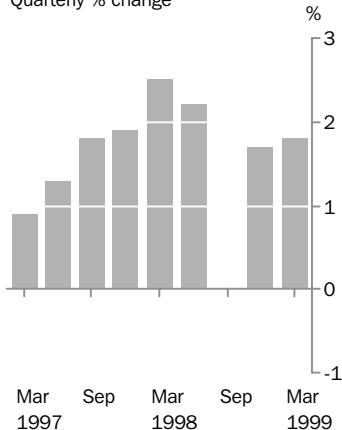
## Established house prices

Base: 1989-1990=100.0



## Established house prices

Quarterly % change



## MARCH QTR KEY FIGURES

| ESTABLISHED HOUSE PRICES | % change<br>Dec Qtr 1998 to<br>Mar Qtr 1999     | % change<br>Mar Qtr 1998 to<br>Mar Qtr 1999 |
|--------------------------|---|---|
|                          | <b>Weighted average of eight capital cities</b> | <b>1.8</b>                                  |
| Sydney                   | 1.5   | 6.1   |
| Melbourne                | 2.9   | 10.9  |
| Brisbane                 | 0.7   | 2.0   |
| Adelaide                 | 0.6   | -0.3  |
| Perth                    | 2.3   | 6.2   |
| Hobart                   | 1.6   | -4.5  |
| Darwin                   | -0.1  | -2.4  |
| Canberra                 | 0.6   | 1.2   |

## MARCH QTR KEY POINTS

### ESTABLISHED HOUSE PRICES

#### QUARTERLY CHANGES

- The price index of established houses in Australia rose 1.8% between the December quarter 1998 and the March quarter 1999.
- The price rises in Melbourne (+2.9%), Perth (+2.3%), Hobart (+1.6%), Sydney (+1.5%), Brisbane (+0.7%), Adelaide (+0.6%) and Canberra (+0.6%) more than offset a small fall in Darwin (-0.1%).

#### ANNUAL CHANGES

- Over the year to the March quarter 1999, the established house price index rose 5.7%.
- The price increases in Melbourne (+10.9%), Perth (+6.2%), Sydney (+6.1%), Brisbane (+2.0%) and Canberra (+1.2%) more than offset falls in Hobart (-4.5%), Darwin (-2.4%) and Adelaide (-0.3%).

- For further information about these and related statistics, contact Steve Whennan on Canberra 02 6252 6251, or any ABS office shown on the back cover of this publication.

# NOTES

## FORTHCOMING ISSUES

*ISSUE (Quarter)*

*RELEASE DATE*

June 1999

2 September 1999

September 1999

2 December 1999



## CHANGES IN THIS ISSUE

There are no changes in this issue.



T. J. Skinner

Acting Australian Statistician

## ESTABLISHED HOUSE PRICE INDEX NUMBERS(a)

| <i>Period</i>    | <i>Sydney</i> | <i>Melbourne</i> | <i>Brisbane</i> | <i>Adelaide</i> | <i>Perth</i> | <i>Hobart</i> | <i>Darwin</i> | <i>Canberra</i> | <i>Weighted<br/>average of<br/>eight capital<br/>cities</i> |
|------------------|---------------|------------------|-----------------|-----------------|--------------|---------------|---------------|-----------------|---|
| <b>1995-1996</b> | 115.8         | 97.6             | 136.8           | 108.3           | 108.2        | 129.8         | 188.0         | 127.8           | 112.7   |
| <b>1996-1997</b> | 118.9         | 101.4            | 137.2           | 108.2           | 109.2        | 128.5         | 196.9         | 126.4           | 115.1   |
| <b>1997-1998</b> | 128.5         | 114.3            | 138.9           | 112.1           | 113.3        | 125.4         | 198.9         | 126.2           | 122.8   |
| <b>1995</b>      |               |                  |                 |                 |              |               |               |                 |   |
| September        | 115.8         | 96.9             | 137.0           | 110.0           | 108.6        | 129.2         | 184.2         | 128.0           | 112.6   |
| December         | 115.2         | 97.3             | 137.0           | 107.5           | 108.3        | 129.1         | 187.9         | 128.6           | 112.4   |
| <b>1996</b>      |               |                  |                 |                 |              |               |               |                 |   |
| March            | 115.4         | 97.1             | 136.2           | 107.7           | 107.5        | 129.8         | 190.0         | 127.0           | 112.2   |
| June             | 116.7         | 99.1             | 137.1           | 107.9           | 108.2        | 131.2         | 190.0         | 127.4           | 113.6   |
| September        | 117.5         | 99.4             | 137.5           | 107.8           | 108.0        | 130.2         | 191.8         | 127.2           | 114.0   |
| December         | 118.0         | 101.2            | 136.1           | 106.7           | 107.5        | 128.5         | 195.1         | 126.6           | 114.3   |
| <b>1997</b>      |               |                  |                 |                 |              |               |               |                 |   |
| March            | 119.4         | 101.3            | 136.0           | 109.3           | 110.4        | 130.4         | 198.4         | 124.3           | 115.3   |
| June             | 120.5         | 103.6            | 139.0           | 109.0           | 110.9        | 124.9         | 202.2         | 127.3           | 116.8   |
| September        | 123.6         | 107.8            | 137.8           | 109.8           | 112.2        | 123.5         | 199.5         | 125.1           | 118.9   |
| December         | 125.0         | 113.5            | 138.6           | 110.8           | 112.8        | 123.9         | 202.4         | 126.2           | 121.2   |
| <b>1998</b>      |               |                  |                 |                 |              |               |               |                 |   |
| March            | 130.9         | 115.6            | 137.9           | 114.0           | 113.7        | 129.5         | 199.7         | 127.1           | 124.2   |
| June             | 134.4         | 120.2            | 141.1           | 113.7           | 114.4        | 124.8         | 193.8         | 126.4           | 126.9   |
| September        | 133.2         | 121.2            | 142.5           | 113.1           | 115.4        | 123.8         | 189.2         | 126.7           | 126.9   |
| December         | 136.8         | 124.6            | 139.6           | 113.0           | 118.1        | 121.7         | 195.0         | 127.8           | 129.0   |
| <b>1999</b>      |               |                  |                 |                 |              |               |               |                 |   |
| March            | 138.9         | 128.2            | 140.6           | 113.7           | 120.8        | 123.7         | 194.9         | 128.6           | 131.3   |

(a) Base of each index 1989-90 = 100.0

## ESTABLISHED HOUSE PRICE INDEXES, Percentage Changes

| <i>Period</i>   | <i>Sydney</i> | <i>Melbourne</i> | <i>Brisbane</i> | <i>Adelaide</i> | <i>Perth</i> | <i>Hobart</i> | <i>Darwin</i> | <i>Canberra</i> | <i>Weighted average of eight capital cities</i> |
|---|---------------|------------------|-----------------|-----------------|--------------|---------------|---------------|-----------------|---|
| PERCENTAGE CHANGE (from previous year)                          |               |                  |                 |                 |              |               |               |                 |   |
| <b>1995-1996</b>  | 1.8           | -0.3             | -1.8            | -3.0            | -0.7         | 0.6           | 5.6           | -2.0            | 0.1   |
| <b>1996-1997</b>  | 2.7           | 3.9              | 0.3             | -0.1            | 0.9          | -1.0          | 4.7           | -1.1            | 2.1   |
| <b>1997-1998</b>  | 8.1           | 12.7             | 1.2             | 3.6             | 3.8          | -2.4          | 1.0           | -0.2            | 6.7   |
| PERCENTAGE CHANGE (from corresponding quarter of previous year) |               |                  |                 |                 |              |               |               |                 |   |
| <b>1995</b>   |               |                  |                 |                 |              |               |               |                 |   |
| September   | 1.3           | -0.3             | -1.7            | -2.9            | 0.6          | 0.8           | 6.5           | -3.3            | 0.0   |
| December  | 2.5           | -0.6             | -2.1            | -3.0            | -0.7         | 0.7           | 6.1           | -1.5            | 0.3   |
| <b>1996</b>   |               |                  |                 |                 |              |               |               |                 |   |
| March   | 0.4           | -0.9             | -2.9            | -3.5            | -1.5         | 0.3           | 6.1           | -2.9            | -0.9  |
| June  | 3.1           | 0.5              | -0.4            | -3.0            | -1.4         | 0.8           | 3.8           | -0.5            | 1.1   |
| September   | 1.5           | 2.6              | 0.4             | -2.0            | -0.6         | 0.8           | 4.1           | -0.6            | 1.2   |
| December  | 2.4           | 4.0              | -0.7            | -0.7            | -0.7         | -0.5          | 3.8           | -1.6            | 1.7   |
| <b>1997</b>   |               |                  |                 |                 |              |               |               |                 |   |
| March   | 3.5           | 4.3              | -0.1            | 1.5             | 2.7          | 0.5           | 4.4           | -2.1            | 2.8   |
| June  | 3.3           | 4.5              | 1.4             | 1.0             | 2.5          | -4.8          | 6.4           | -0.1            | 2.8   |
| September   | 5.2           | 8.5              | 0.2             | 1.9             | 3.9          | -5.1          | 4.0           | -1.7            | 4.3   |
| December  | 5.9           | 12.2             | 1.8             | 3.8             | 4.9          | -3.6          | 3.7           | -0.3            | 6.0   |
| <b>1998</b>   |               |                  |                 |                 |              |               |               |                 |   |
| March   | 9.6           | 14.1             | 1.4             | 4.3             | 3.0          | -0.7          | 0.7           | 2.3             | 7.7   |
| June  | 11.5          | 16.0             | 1.5             | 4.3             | 3.2          | -0.1          | -4.2          | -0.7            | 8.6   |
| September   | 7.8           | 12.4             | 3.4             | 3.0             | 2.9          | 0.2           | -5.2          | 1.3             | 6.7   |
| December  | 9.4           | 9.8              | 0.7             | 2.0             | 4.7          | -1.8          | -3.7          | 1.3             | 6.4   |
| <b>1999</b>   |               |                  |                 |                 |              |               |               |                 |   |
| March   | 6.1           | 10.9             | 2.0             | -0.3            | 6.2          | -4.5          | -2.4          | 1.2             | 5.7   |
| PERCENTAGE CHANGE (from previous quarter)                       |               |                  |                 |                 |              |               |               |                 |   |
| <b>1995</b>   |               |                  |                 |                 |              |               |               |                 |   |
| September   | 2.3           | -1.7             | -0.5            | -1.1            | -1.0         | -0.7          | 0.7           | -0.1            | 0.2   |
| December  | -0.5          | 0.4              | 0.0             | -2.3            | -0.3         | -0.1          | 2.0           | 0.5             | -0.2  |
| <b>1996</b>   |               |                  |                 |                 |              |               |               |                 |   |
| March   | 0.2           | -0.2             | -0.6            | 0.2             | -0.7         | 0.5           | 1.1           | -1.2            | -0.2  |
| June  | 1.1           | 2.1              | 0.7             | 0.2             | 0.7          | 1.1           | 0.0           | 0.3             | 1.2   |
| September   | 0.7           | 0.3              | 0.3             | -0.1            | -0.2         | -0.8          | 0.9           | -0.2            | 0.4   |
| December  | 0.4           | 1.8              | -1.0            | -1.0            | -0.5         | -1.3          | 1.7           | -0.5            | 0.3   |
| <b>1997</b>   |               |                  |                 |                 |              |               |               |                 |   |
| March   | 1.2           | 0.1              | -0.1            | 2.4             | 2.7          | 1.5           | 1.7           | -1.8            | 0.9   |
| June  | 0.9           | 2.3              | 2.2             | -0.3            | 0.5          | -4.2          | 1.9           | 2.4             | 1.3   |
| September   | 2.6           | 4.1              | -0.9            | 0.7             | 1.2          | -1.1          | -1.3          | -1.7            | 1.8   |
| December  | 1.1           | 5.3              | 0.6             | 0.9             | 0.5          | 0.3           | 1.5           | 0.9             | 1.9   |
| <b>1998</b>   |               |                  |                 |                 |              |               |               |                 |   |
| March   | 4.7           | 1.9              | -0.5            | 2.9             | 0.8          | 4.5           | -1.3          | 0.7             | 2.5   |
| June  | 2.7           | 4.0              | 2.3             | -0.3            | 0.6          | -3.6          | -3.0          | -0.6            | 2.2   |
| September   | -0.9          | 0.8              | 1.0             | -0.5            | 0.9          | -0.8          | -2.4          | 0.2             | 0.0   |
| December  | 2.7           | 2.8              | -2.0            | -0.1            | 2.3          | -1.7          | 3.1           | 0.9             | 1.7   |
| <b>1999</b>   |               |                  |                 |                 |              |               |               |                 |   |
| March   | 1.5           | 2.9              | 0.7             | 0.6             | 2.3          | 1.6           | -0.1          | 0.6             | 1.8   |

## PROJECT HOME PRICE INDEX NUMBERS(a)

| <i>Period</i>    | <i>Sydney</i> | <i>Melbourne</i> | <i>Brisbane</i> | <i>Adelaide</i> | <i>Perth</i> | <i>Hobart</i> | <i>Darwin</i> | <i>Canberra</i> | <i>Weighted<br/>average of<br/>eight capital<br/>cities</i> |
|------------------|---------------|------------------|-----------------|-----------------|--------------|---------------|---------------|-----------------|---|
| <b>1995-1996</b> | 110.2         | 107.3            | 113.7           | 112.8           | 101.6        | 123.4         | 129.9         | 124.7           | 109.5   |
| <b>1996-1997</b> | 110.4         | 107.7            | 112.7           | 108.3           | 101.3        | 123.3         | 136.0         | 123.6           | 109.2   |
| <b>1997-1998</b> | 112.2         | 108.6            | 112.4           | 113.1           | 102.2        | 123.3         | 137.3         | 123.5           | 110.3   |
| <b>1995</b>      |               |                  |                 |                 |              |               |               |                 |   |
| September        | 110.2         | 107.3            | 113.4           | 113.2           | 102.2        | 123.5         | 129.6         | 126.4           | 109.6   |
| December         | 109.9         | 107.1            | 113.8           | 112.7           | 101.6        | 123.5         | 129.7         | 124.6           | 109.4   |
| <b>1996</b>      |               |                  |                 |                 |              |               |               |                 |   |
| March            | 110.3         | 107.2            | 113.8           | 113.1           | 101.3        | 123.3         | 130.0         | 123.8           | 109.5   |
| June             | 110.4         | 107.4            | 113.9           | 112.1           | 101.4        | 123.3         | 130.4         | 123.9           | 109.6   |
| September        | 109.5         | 107.3            | 113.9           | 111.3           | 101.5        | 123.3         | 134.4         | 123.8           | 109.4   |
| December         | 110.3         | 107.7            | 112.4           | 107.3           | 101.4        | 123.3         | 135.1         | 123.7           | 109.1   |
| <b>1997</b>      |               |                  |                 |                 |              |               |               |                 |   |
| March            | 110.4         | 107.9            | 112.6           | 107.7           | 101.2        | 123.3         | 136.8         | 123.6           | 109.2   |
| June             | 111.3         | 107.9            | 111.9           | 106.9           | 101.2        | 123.3         | 137.6         | 123.1           | 109.2   |
| September        | 112.0         | 108.4            | 112.2           | 111.9           | 101.3        | 123.3         | 137.8         | 123.3           | 109.9   |
| December         | 112.0         | 108.5            | 112.3           | 112.5           | 101.4        | 123.3         | 137.2         | 123.3           | 110.0   |
| <b>1998</b>      |               |                  |                 |                 |              |               |               |                 |   |
| March            | 112.2         | 108.4            | 112.5           | 113.7           | 102.5        | 123.3         | 137.0         | 123.7           | 110.4   |
| June             | 112.5         | 109.0            | 112.6           | 114.4           | 103.6        | 123.3         | 137.0         | 123.7           | 110.8   |
| September        | 113.5         | 109.6            | 112.5           | 114.2           | 104.9        | 123.3         | 137.4         | 123.7           | 111.4   |
| December         | 113.6         | 111.9            | 112.8           | 116.2           | 105.8        | 123.3         | 138.5         | 124.3           | 112.3   |
| <b>1999</b>      |               |                  |                 |                 |              |               |               |                 |   |
| March            | 116.6         | 113.5            | 113.5           | 117.9           | 106.2        | 123.3         | 139.2         | 124.3           | 113.8   |

(a) Base of each index 1989-90 = 100.0

## PROJECT HOME PRICE INDEXES, Percentage Changes

| <i>Period</i>   | <i>Sydney</i> | <i>Melbourne</i> | <i>Brisbane</i> | <i>Adelaide</i> | <i>Perth</i> | <i>Hobart</i> | <i>Darwin</i> | <i>Canberra</i> | <i>Weighted average of eight capital cities</i> |
|---|---------------|------------------|-----------------|-----------------|--------------|---------------|---------------|-----------------|---|
| PERCENTAGE CHANGE (from previous year)                          |               |                  |                 |                 |              |               |               |                 |   |
| <b>1995-1996</b>  | 2.1           | 1.4              | 1.1             | -1.6            | 1.6          | 1.7           | 3.8           | -3.5            | 1.3   |
| <b>1996-1997</b>  | 0.2           | 0.4              | -0.9            | -4.0            | -0.3         | -0.1          | 4.7           | -0.9            | -0.3  |
| <b>1997-1998</b>  | 1.6           | 0.8              | -0.3            | 4.4             | 0.9          | 0.0           | 1.0           | -0.1            | 1.0   |
| PERCENTAGE CHANGE (from corresponding quarter of previous year) |               |                  |                 |                 |              |               |               |                 |   |
| <b>1995</b>   |               |                  |                 |                 |              |               |               |                 |   |
| September   | 2.9           | 2.2              | 1.4             | -1.0            | 3.2          | 2.8           | 4.8           | -3.4            | 2.0   |
| December  | 1.3           | 1.2              | 1.2             | -2.0            | 2.0          | 2.5           | 4.0           | -4.1            | 1.0   |
| <b>1996</b>   |               |                  |                 |                 |              |               |               |                 |   |
| March   | 3.0           | 1.2              | 0.9             | -1.1            | 0.9          | 1.4           | 3.9           | -3.9            | 1.4   |
| June  | 1.6           | 0.9              | 0.9             | -2.2            | 0.6          | 0.2           | 2.4           | -2.6            | 0.8   |
| September   | -0.6          | 0.0              | 0.4             | -1.7            | -0.7         | -0.2          | 3.7           | -2.1            | -0.2  |
| December  | 0.4           | 0.6              | -1.2            | -4.8            | -0.2         | -0.2          | 4.2           | -0.7            | -0.3  |
| <b>1997</b>   |               |                  |                 |                 |              |               |               |                 |   |
| March   | 0.1           | 0.7              | -1.1            | -4.8            | -0.1         | 0.0           | 5.2           | -0.2            | -0.3  |
| June  | 0.8           | 0.5              | -1.8            | -4.6            | -0.2         | 0.0           | 5.5           | -0.6            | -0.4  |
| September   | 2.3           | 1.0              | -1.5            | 0.5             | -0.2         | 0.0           | 2.5           | -0.4            | 0.5   |
| December  | 1.5           | 0.7              | -0.1            | 4.8             | 0.0          | 0.0           | 1.6           | -0.3            | 0.8   |
| <b>1998</b>   |               |                  |                 |                 |              |               |               |                 |   |
| March   | 1.6           | 0.5              | -0.1            | 5.6             | 1.3          | 0.0           | 0.1           | 0.1             | 1.1   |
| June  | 1.1           | 1.0              | 0.6             | 7.0             | 2.4          | 0.0           | -0.4          | 0.5             | 1.5   |
| September   | 1.4           | 1.1              | 0.2             | 2.1             | 3.6          | 0.0           | -0.3          | 0.3             | 1.4   |
| December  | 1.4           | 3.1              | 0.4             | 3.3             | 4.3          | 0.0           | 0.9           | 0.8             | 2.1   |
| <b>1999</b>   |               |                  |                 |                 |              |               |               |                 |   |
| March   | 3.9           | 4.7              | 0.9             | 3.7             | 3.6          | 0.0           | 1.6           | 0.5             | 3.1   |
| PERCENTAGE CHANGE (from previous quarter)                       |               |                  |                 |                 |              |               |               |                 |   |
| <b>1995</b>   |               |                  |                 |                 |              |               |               |                 |   |
| September   | 1.4           | 0.8              | 0.4             | -1.2            | 1.4          | 0.3           | 1.8           | -0.6            | 0.8   |
| December  | -0.3          | -0.2             | 0.4             | -0.4            | -0.6         | 0.0           | 0.1           | -1.4            | -0.2  |
| <b>1996</b>   |               |                  |                 |                 |              |               |               |                 |   |
| March   | 0.4           | 0.1              | 0.0             | 0.4             | -0.3         | -0.2          | 0.2           | -0.6            | 0.1   |
| June  | 0.1           | 0.2              | 0.1             | -0.9            | 0.1          | 0.0           | 0.3           | 0.1             | 0.1   |
| September   | -0.8          | -0.1             | 0.0             | -0.7            | 0.1          | 0.0           | 3.1           | -0.1            | -0.2  |
| December  | 0.7           | 0.4              | -1.3            | -3.6            | -0.1         | 0.0           | 0.5           | -0.1            | -0.3  |
| <b>1997</b>   |               |                  |                 |                 |              |               |               |                 |   |
| March   | 0.1           | 0.2              | 0.2             | 0.4             | -0.2         | 0.0           | 1.3           | -0.1            | 0.1   |
| June  | 0.8           | 0.0              | -0.6            | -0.7            | 0.0          | 0.0           | 0.6           | -0.4            | 0.0   |
| September   | 0.6           | 0.5              | 0.3             | 4.7             | 0.1          | 0.0           | 0.1           | 0.2             | 0.6   |
| December  | 0.0           | 0.1              | 0.1             | 0.5             | 0.1          | 0.0           | -0.4          | 0.0             | 0.1   |
| <b>1998</b>   |               |                  |                 |                 |              |               |               |                 |   |
| March   | 0.2           | -0.1             | 0.2             | 1.1             | 1.1          | 0.0           | -0.1          | 0.3             | 0.4   |
| June  | 0.3           | 0.6              | 0.1             | 0.6             | 1.1          | 0.0           | 0.0           | 0.0             | 0.4   |
| September   | 0.9           | 0.5              | -0.1            | -0.1            | 1.3          | 0.0           | 0.3           | 0.0             | 0.5   |
| December  | 0.1           | 2.1              | 0.3             | 1.8             | 0.9          | 0.0           | 0.8           | 0.5             | 0.8   |
| <b>1999</b>   |               |                  |                 |                 |              |               |               |                 |   |
| March   | 2.6           | 1.4              | 0.6             | 1.5             | 0.4          | 0.0           | 0.5           | 0.0             | 1.3   |

## SELECTED HOUSING PRICE INDEX NUMBER SERIES(a)–Australia

| <i>Period</i>    | <i>Established<br/>houses</i> | <i>Project homes</i> | <i>Materials used<br/>in house<br/>building</i> | <i>National<br/>accounts<br/>private<br/>housing<br/>investment</i> |
|------------------|-------------------------------|----------------------|---|---|
| <b>1995-1996</b> | 112.7                         | 109.5                | 115.7   | 112.4   |
| <b>1996-1997</b> | 115.1                         | 109.2                | 116.1   | 112.6   |
| <b>1997-1998</b> | 122.8                         | 110.3                | 118.2   | 113.0   |
| <b>1995</b>      |                               |                      |   |   |
| September        | 112.6                         | 109.6                | 116.2   | 111.7   |
| December         | 112.4                         | 109.4                | 115.7   | 112.5   |
| <b>1996</b>      |                               |                      |   |   |
| March            | 112.2                         | 109.5                | 115.3   | 112.9   |
| June             | 113.6                         | 109.6                | 115.5   | 112.6   |
| September        | 114.0                         | 109.4                | 115.6   | 112.8   |
| December         | 114.3                         | 109.1                | 115.8   | 112.7   |
| <b>1997</b>      |                               |                      |   |   |
| March            | 115.3                         | 109.2                | 116.1   | 112.5   |
| June             | 116.8                         | 109.2                | 117.0   | 112.4   |
| September        | 118.9                         | 109.9                | 117.3   | 112.4   |
| December         | 121.2                         | 110.0                | 117.9   | 112.9   |
| <b>1998</b>      |                               |                      |   |   |
| March            | 124.2                         | 110.4                | 118.7   | 113.2   |
| June             | 126.9                         | 110.8                | 119.0   | 113.4   |
| September        | 126.9                         | 111.4                | 119.4   | 113.8   |
| December         | 129.0                         | 112.3                | 119.7   | 114.4   |
| <b>1999</b>      |                               |                      |   |   |
| March            | 131.3                         | 113.8                | 119.5   | 115.0   |

(a) Base of each index 1989-90 = 100.0

## SELECTED HOUSING PRICE INDEX NUMBER SERIES, Australia—Percentage Changes

| <i>Period</i>   | <i>Established<br/>houses</i> | <i>Project homes</i> | <i>Materials used<br/>in house<br/>building</i> | <i>National<br/>accounts<br/>private<br/>housing<br/>investment</i> |
|---|-------------------------------|----------------------|---|---|
| PERCENTAGE CHANGE (from previous year)                          |                               |                      |   |   |
| <b>1995-1996</b>  | 0.1                           | 1.3                  | 0.3   | 1.7   |
| <b>1996-1997</b>  | 2.1                           | -0.3                 | 0.3   | 0.2   |
| <b>1997-1998</b>  | 6.7                           | 1.0                  | 1.8   | 0.4   |
| PERCENTAGE CHANGE (from corresponding quarter of previous year) |                               |                      |   |   |
| <b>1995</b>   |                               |                      |   |   |
| September   | 0.0                           | 2.0                  | 1.8   | 2.1   |
| December  | 0.3                           | 1.0                  | 0.4   | 2.0   |
| <b>1996</b>   |                               |                      |   |   |
| March   | -0.9                          | 1.4                  | -0.5  | 1.6   |
| June  | 1.1                           | 0.8                  | -0.9  | 1.2   |
| September   | 1.2                           | -0.2                 | -0.5  | 1.0   |
| December  | 1.7                           | -0.3                 | 0.1   | 0.2   |
| <b>1997</b>   |                               |                      |   |   |
| March   | 2.8                           | -0.3                 | 0.7   | -0.4  |
| June  | 2.8                           | -0.4                 | 1.3   | -0.2  |
| September   | 4.3                           | 0.5                  | 1.5   | -0.4  |
| December  | 6.0                           | 0.8                  | 1.8   | 0.2   |
| <b>1998</b>   |                               |                      |   |   |
| March   | 7.7                           | 1.1                  | 2.2   | 0.6   |
| June  | 8.6                           | 1.5                  | 1.7   | 0.9   |
| September   | 6.7                           | 1.4                  | 1.8   | 1.2   |
| December  | 6.4                           | 2.1                  | 1.5   | 1.3   |
| <b>1999</b>   |                               |                      |   |   |
| March   | 5.7                           | 3.1                  | 0.7   | 1.6   |
| PERCENTAGE CHANGE (from previous quarter)                       |                               |                      |   |   |
| <b>1995</b>   |                               |                      |   |   |
| September   | 0.2                           | 0.8                  | -0.3  | 0.4   |
| December  | -0.2                          | -0.2                 | -0.4  | 0.7   |
| <b>1996</b>   |                               |                      |   |   |
| March   | -0.2                          | 0.1                  | -0.3  | 0.4   |
| June  | 1.2                           | 0.1                  | 0.2   | -0.3  |
| September   | 0.4                           | -0.2                 | 0.1   | 0.2   |
| December  | 0.3                           | -0.3                 | 0.2   | -0.1  |
| <b>1997</b>   |                               |                      |   |   |
| March   | 0.9                           | 0.1                  | 0.3   | -0.2  |
| June  | 1.3                           | 0.0                  | 0.8   | -0.1  |
| September   | 1.8                           | 0.6                  | 0.3   | 0.0   |
| December  | 1.9                           | 0.1                  | 0.5   | 0.4   |
| <b>1998</b>   |                               |                      |   |   |
| March   | 2.5                           | 0.4                  | 0.7   | 0.3   |
| June  | 2.2                           | 0.4                  | 0.3   | 0.2   |
| September   | 0.0                           | 0.5                  | 0.3   | 0.4   |
| December  | 1.7                           | 0.8                  | 0.3   | 0.5   |
| <b>1999</b>   |                               |                      |   |   |
| March   | 1.8                           | 1.3                  | -0.2  | 0.5   |



## EXPLANATORY NOTES

### INTRODUCTION

**1** This publication provides estimates of changes in house prices for each of the eight capital cities of Australia. The information is presented in the form of price indexes constructed separately for *Established Houses* and for *Project Homes* (see below for definitions). It is calculated on the reference base 1989–90 = 100.0 for the eight capital cities. The capital city indexes measure price movements over time in each city individually. They do not measure differences in price levels between cities.

**2** The index for Project Homes is compiled by the ABS for use in calculating the House purchase component of the Consumer Price Index (CPI). The index for Established Houses, while not contributing to the CPI, is compiled and published along with the Project Homes index in recognition of the widespread interest in information specifically relating to housing.

**3** To assist in the analysis of housing price movements at the national level, Australian series have also been compiled and are presented in tables 5 and 6 along with series for prices of building materials and private housing investment (from the Australian National Accounts). For information on the derivation of series in these tables see paragraph 13.

### DEFINITIONS

**ESTABLISHED HOUSES** **4** Detached residential dwellings on their own block of land regardless of age (i.e. including new houses sold as a house/land package as well as second-hand houses). Price changes therefore relate to changes in the total price of dwelling and land.

**PROJECT HOMES** **5** Dwellings available for construction on a client's block of land. Price changes therefore relate only to the price of the dwelling (excluding land).

### PRICE INDEXES

**6** A price index is concerned with measuring pure price change—that is, it is concerned with isolating and measuring that element of price change which is not brought about by any change to either the quantity or the quality of the goods or services for which the index is required.

**7** The techniques used to construct a price index for project homes are similar to those used for most other goods. A representative sample of project home models is selected in each city, prices obtained each quarter and the price movements for each model weighted together. Constant quality is preserved by calculating price movements on a matched sample basis (i.e. the price movements between adjacent quarters are based on the same models in each quarter). If the specification of an individual model changes substantially or a price is unable to be obtained then that model is excluded from the calculation of price movement. Adjustments are made to raw prices to compensate for any minor changes in specifications.

**8** The construction of a price index for established houses, on the other hand, poses a number of problems. First, in addition to the physical characteristics of a dwelling (such as outer-wall construction, total overall size and number of rooms) its geographical location is a significant component of quality. Second, the only price data available relates to sales that have actually taken place during each quarter. Movements in the average price derived from total sales data in each period would not provide a measure of pure price change as the measure would be influenced by compositional changes (i.e. the prices from one period to the next would relate to houses of different quality).

## EXPLANATORY NOTES

### PRICE INDEXES *continued*

**9** In order to minimise the effects of compositional change on these indexes, the raw sales price data is stratified by geographic area and physical characteristics of dwelling. The overall movement in the index is calculated by weighting together the price movements in individual strata. To reduce costs, this procedure is carried out for a sample of Local Government Areas in each city.

**10** Price information for project homes is obtained at the end of each quarter from a sample of project home builders in each city. Sale prices of established houses are obtained from real estate organisations and government agencies and relate to actual sales transacted during the quarter.

### LIMITATIONS OF HOUSE PRICE INDEXES

**11** The reliability of each index is largely dependent upon the availability of sufficient pricing information each quarter. While not a problem for project homes, difficulties are sometimes encountered when compiling the indexes for established houses as the number of price observations available across the range of dwelling types depends on market activity in each quarter.

**12** These series most effected by limited market scope is Darwin established house price index. Rather than suppress publication, the series is included here because it is believed that the long term trend is reliable. However, because of limitations in the reliability of individual quarter to quarter movement users are advised to exercise due caution when analysing such movements.

### NATIONAL HOUSE PRICE AND OTHER INDEXES

**13** These series are presented to facilitate analysis of price movements at a national level. Although coverage is not, in all cases, strictly national, this is not believed to significantly impair their usefulness. The derivation or source of each series is as follows:

*Established houses:* This series is derived by weighting together the indexes for each of the eight capital cities according to the value of secured finance commitments to individuals in each of the States and Territories for the purchase of newly erected and established houses in 1985–86 until June quarter 1996, and thereafter commitments in 1994–95. The source of weighting information is unpublished data from the ABS survey of Housing Finance for Owner Occupation.

*Project homes:* This series is derived by weighting together the indexes for each of the eight capital cities according to the value of secured finance commitments to individuals in each of the States and Territories for the construction of houses in 1985–86 until June quarter 1996, and thereafter commitments in 1994–95. The source of weighting information is unpublished data from the ABS survey of Housing Finance for Owner Occupation.

Although the capital city price indexes for project homes are used to measure price change for the CPI House purchase expenditure class, price movements exhibited in the respective series at the national level are not directly comparable. The weighting pattern used in the CPI House purchase index differs from that described above for project homes index. The CPI weights relate to the net acquisition of dwellings (excluding land) by private households in each of the eight capital cities (i.e. they include dwellings acquired from the government and business sectors, alterations and additions to existing dwellings and are capital city specific).

*Materials used in house building:* The series included here is that published for the weighted average of the six State capital cities in Price Index of Materials Used in House Building, Six State Capital Cities (Cat. no. 6408.0).

## EXPLANATORY NOTES

NATIONAL HOUSE PRICE AND  
OTHER INDEXES *continued*

*Private Housing Investment*: This series is the annually-reweighted chain Laspeyres price index for private capital expenditure (houses), as used (but not separately published) in *Australian National Accounts: National Income, Expenditure and Product* (Cat. no. 5206.0), referenced to 1989–90 = 100.0.

ANALYSIS OF CHANGES IN INDEX  
NUMBERS

**14** The indexes presented in this publication are calculated on a quarterly basis with a reference base of 1989–90 = 100.0. In compiling these indexes quarterly, the objective is to measure the change between average price levels during one quarter and average price levels during the next quarter.

**15** Index numbers are also presented for financial years where the index numbers for financial years are simple (arithmetic) averages of the quarterly index numbers. Index numbers for calendar years may be derived in the same way.

**16** Movements in indexes from one period to another can be expressed either as changes in *index points* or as percentage changes. The following example illustrates the method of calculating index points changes and percentage changes between any two periods:

Established houses: Sydney index numbers —

|                            |       |               |
|----------------------------|-------|---------------|
| March Quarter 1999         | 138.9 | (see Table 1) |
| less December Quarter 1998 | 136.8 | (see Table 1) |
| Change in index points:    | 2.1   |               |

$$\text{Percentage change} = \frac{2.1}{136.8} \times 100 = 1.5\%$$

**17** In this publication, percentage changes are calculated to illustrate three different kinds of movements in index numbers:

- movements between consecutive financial years (change between average price levels during one financial year and average price levels during the next financial year)
- movements between corresponding quarters of consecutive years
- movements between consecutive quarters.

RELATED PUBLICATIONS

**18** Users may also wish to refer to the following publications which are available on request:

- *Australian National Accounts: National Income, Expenditure and Product* (Cat. no. 5206.0)—issued quarterly
- *Building Activity, Australia* (Cat. no. 8752.0)—issued quarterly
- *Building Approvals, Australia* (Cat. no. 8731.0)—issued monthly
- *Consumer Price Index* (Cat. no. 6401.0)—issued quarterly
- *Housing Finance for Owner Occupation, Australia* (Cat. no. 5609.0)—issued monthly
- *Price Index of Materials Used in House Building, Six State Capital Cities* (Cat. no. 6408.0)—issued quarterly.

**19** Current publications issued by the ABS are listed in the *Catalogue of Publications and Products, Australia* (Cat. no. 1101.0). The ABS also issues, on Tuesdays and Fridays, a *Release Advice* (Cat. no. 1105.0) which lists publications to be released in the next few days. The Catalogue and Release Advice are available from any ABS office.

SYMBOLS AND OTHER USAGES

n.y.a not yet available  
r revised

## SELF-HELP ACCESS TO STATISTICS

*DIAL-A-STATISTIC* For current and historical Consumer Price Index data, call 1902 981 074.  
For the latest figures for National Accounts, Balance of Payments, Labour Force, Average Weekly Earnings, Estimated Resident Population and the Consumer Price Index call 1900 986 400.  
These calls cost 75c per minute.

*INTERNET* [www.abs.gov.au](http://www.abs.gov.au)

*LIBRARY* A range of ABS publications is available from public and tertiary libraries Australia wide. Contact your nearest library to determine whether it has the ABS statistics you require.

## WHY NOT SUBSCRIBE?

*PHONE* +61 1300 366 323

*FAX* +61 3 9615 7848

## CONSULTANCY SERVICES

ABS offers consultancy services on a user pays basis to help you access published and unpublished data. Data that are already published and can be provided within 5 minutes is free of charge. Statistical methodological services are also available. Please contact:

| <i>City</i> | <i>By phone</i> | <i>By fax</i> |
|-------------|-----------------|---------------|
| Canberra    | 02 6252 6627    | 02 6207 0282  |
| Sydney      | 02 9268 4611    | 02 9268 4668  |
| Melbourne   | 03 9615 7755    | 03 9615 7798  |
| Brisbane    | 07 3222 6351    | 07 3222 6283  |
| Perth       | 08 9360 5140    | 08 9360 5955  |
| Adelaide    | 08 8237 7400    | 08 8237 7566  |
| Hobart      | 03 6222 5800    | 03 6222 5995  |
| Darwin      | 08 8943 2111    | 08 8981 1218  |



2641600003992  
ISSN 1034-1897

RRP \$15.00

*POST* Client Services, ABS, PO Box 10, Belconnen ACT 2616

*EMAIL* [client.services@abs.gov.au](mailto:client.services@abs.gov.au)

© Commonwealth of Australia 1999

Produced by the Australian Bureau of Statistics